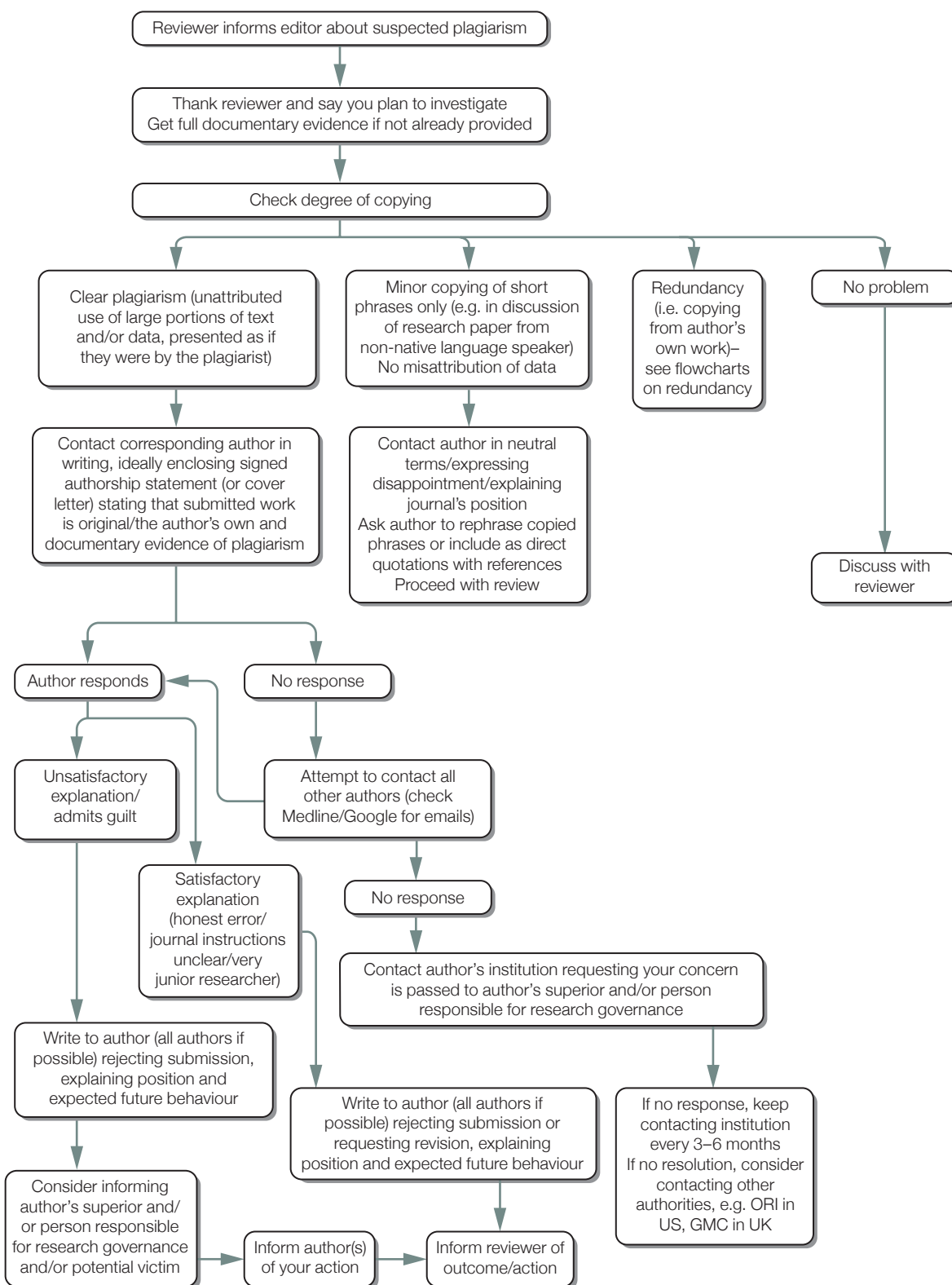


# What to do if you suspect plagiarism

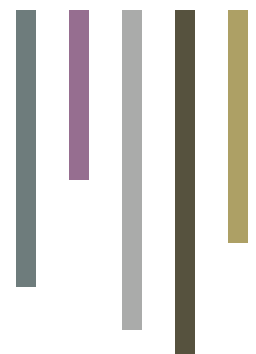
## (a) Suspected plagiarism in a submitted manuscript



**Note**  
The instructions to authors should include a definition of plagiarism and state the journal's policy on it

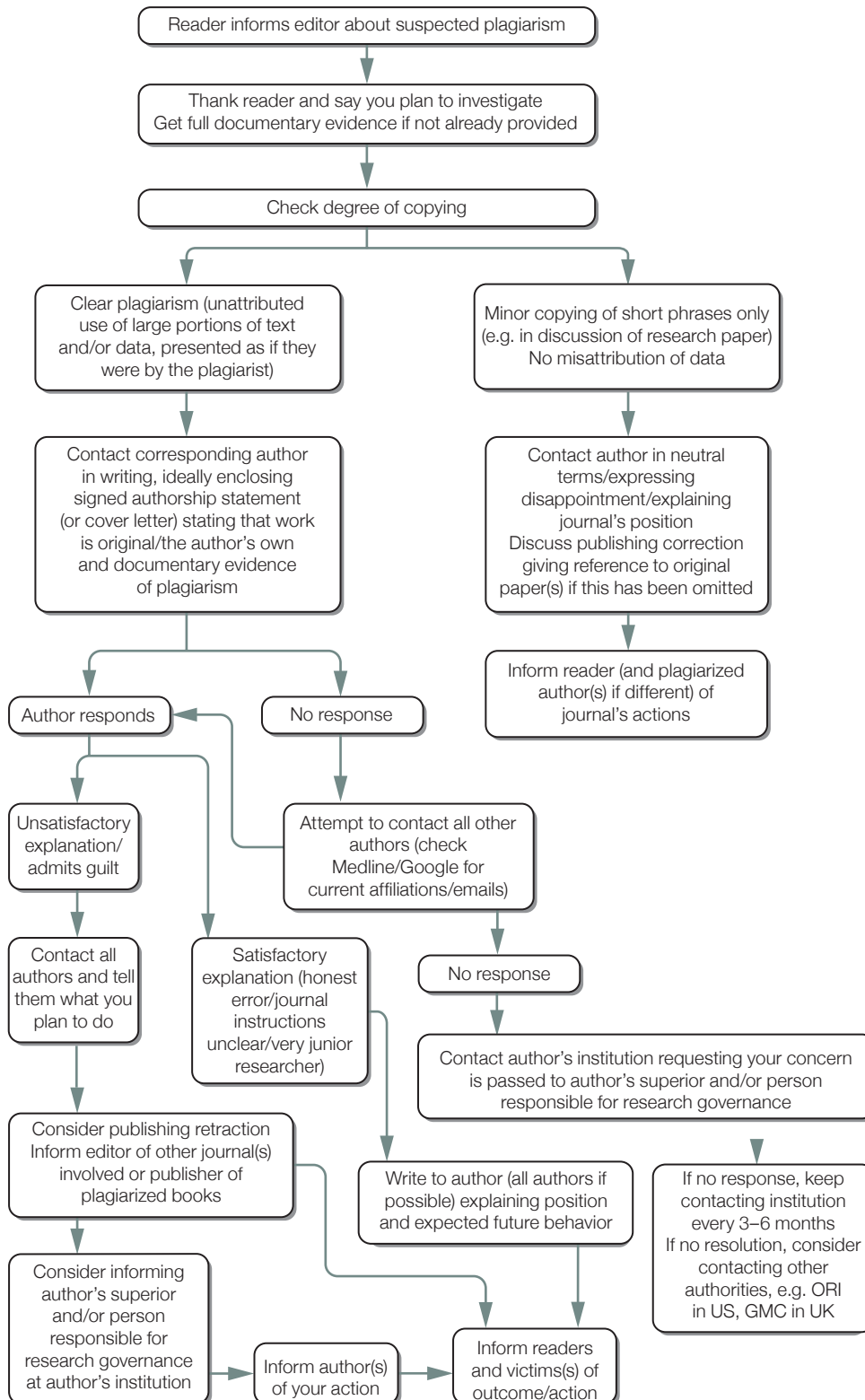
Developed for COPE by Liz Wager of Sideview ([www.lizwager.com](http://www.lizwager.com)) © 2013 Committee on Publication Ethics First published 2006

A non-exclusive licence to reproduce these flowcharts may be applied for by writing to: [cope\\_administrator@publicationethics.org](mailto:cope_administrator@publicationethics.org)



# What to do if you suspect plagiarism

## (b) Suspected plagiarism in a published manuscript



**Note**  
The instructions to authors should include a definition of plagiarism and state the journal's policy on it

Developed for COPE by Liz Wager of Sideview ([www.lizwager.com](http://www.lizwager.com)) © 2013 Committee on Publication Ethics First published 2006

A non-exclusive licence to reproduce these flowcharts may be applied for by writing to: [cope\\_administrator@publicationethics.org](mailto:cope_administrator@publicationethics.org)